

The copyright of this design to the company, without written approval shall not be free to use any part of reproduction. Not to measure the proportion of this figure, all are subject to figures in the drawing. Contractor must be in the factory check digital standards shown in figure, if found any contradiction, shall immediately notify the designer, must be approved by the relevant departments for approval before construction, otherwise adverse and all consequences are part of the design.

Project Name

LED electronic display screen project

Drawing Name

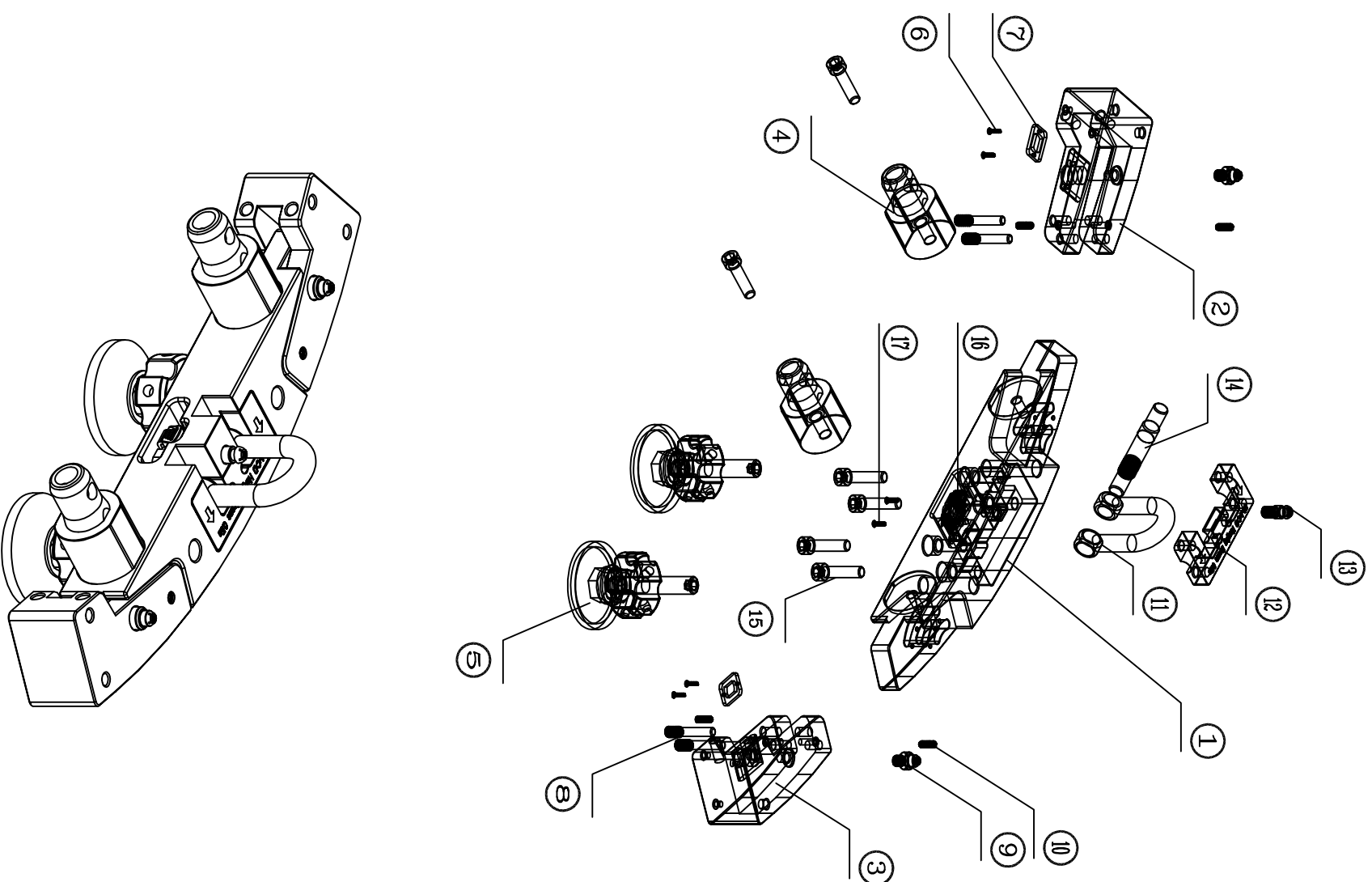
US series product outline drawings

Sheet No

FA01

Project Number	2023XXXX
unit	mm
Designed By	All en
Draw Chart	All en
Revision By	
Checked By	
Phase	FA
Drawing Date	2023-12-01
Scale	1:8
REVISIONS	V1.0

NO#	Name	Description	Material	Quantity	Remark
1	Ground beam main body	Black fine sand texture	5052	1	Remark
2	Left rotation block	Black fine sand texture	5052	1	Remark
3	Rotate block right	Black fine sand texture	5052	1	Remark
4	Connecting shaft sleeve seat	Black fine sand texture	6061	2	Remark
5	Universal foot cup	The color (part of the aluminum block is spray with black fine sand texture)	SUS304+6061	2	/
6	Phillips countersunk head screws	M3*10 (black)	3M stainless steel	4	/
7	Quick locking cleats	/	SUS304	2	/
8	Fixing screws	M8*40 (black)	SUS304	4	/
9	Ratchet lock hole positioning post	/	SUS303	2	/
10	Glass head machine screws	M6*20	SUS303	4	/
11	M16-D type shackle	National standard-shackle	SUS304	1	/
12	Shackle pin cover	Black + laser logo	5052	1	/
13	Push type lock hole positioning column	/	SUS303	1	/
14	revolve	/	SUS304	1	/
15	Fixing screws	Inner hexagon M10*40	SUS304	6	/
16	VHR cleats	Zinc + stainless steel	/	1	/
17	Phillips countersunk head screws	M3*12 (black)	SUS304	2	/



Combination mode